

2016 FIAT® 500L



MORE FIAT. MORE POSSIBILITIES.

SPACIOUS INTERIOR DESIGN

- City-friendly dimensions with seating for up to five
- Spacious interior with generous headroom and legroom
- High ceilings and panoramic views* for a wide-open, airy feel
- Up to 42 percent more room than the FIAT 500

OUTSTANDING PERFORMANCE

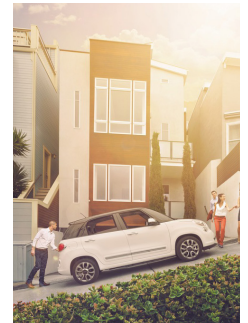
- 1.4L MultiAir® I-4 Turbo engine
- Choice of 6-speed automatic, 6-speed manual transmission, or AISIN® 6-speed automatic*
- 160 horsepower and 184 lb-ft torque

ADVANCED TECHNOLOGY

- Choice of two Uconnect® multimedia centres
 - Uconnect 5.0 multimedia centre with 5-inch touchscreen
 - Uconnect 6.5A multimedia centre with 6.5-inch touchscreen*
- Hands-free communication¹ with Bluetooth® streaming audio
- Electronic Vehicle Information Centre
- SiriusXM Satellite Radio with one-year subscription*²
- BeatsAudio™ premium sound system*
- eco:Drive™ Application

SAFETY & SECURITY

- Seven standard air bags³
- Electronic Stability Control⁴ with Hill Start Assist, Traction Control and Electronic Brake-Force Distribution
- Tire pressure monitoring display
- ParkView® Rear Back-up Camera*⁵
- Park-Sense® Rear Park Assist System*⁵



fiatcanada.com

*Available feature

2016 FIAT® 500L

500L Pop - \$20,495 MSRP¹

Select standard equipment:

Powertrain & Performance

- 1.4L 16V MultiAir® I-4 Turbo with 6-speed manual

Interior

- Air conditioning with micron filter
- Body-colour instrument panel
- Cloth seats with driver and passenger height adjuster
- Electronic Vehicle Information Centre
- Fold-flat front passenger seat
- Front and rear floor mats, front reading lamps
- Interior observation mirror
- Hands-free communication¹ with Bluetooth® streaming audio
- Multi-position shelf panel holds 90.7 kg (200 lb)
- Passenger-assist handles
- Power locks and power windows with one-touch up and down
- Rear 60/40 folding seat with tilt, tumble and slide
- Steering wheel-mounted audio and cruise controls
- Sun visors with vanity mirror
- Tilt/telescoping steering wheel
- Uconnect® 5.0 multimedia centre with 5-inch touch-screen
- USB port and auxiliary input jack

Exterior

- 16-inch steel wheels with covers
- P205/55R16 BSW all-season tires
- Bi-functional halogen projector headlamps
- Black heated, power mirrors
- Body-colour fascia and bodyside moulding
- Body-colour roof
- Bright door handles
- Bright exhaust tip
- Rear window defroster
- Tinted glass windows

Safety & Security

- Reactive front head restraints⁶
- Advanced multistage front air bags³
- Antitheft engine immobilizer
- Aspheric driver exterior mirrors
- Child seat anchor system (LATCH)
- Driver's knee blocker
- Electronic Stability Control (ESC)⁴ with Hill Start Assist
- Traction Control and Electronic Brake-force Distribution
- Engine block heater
- Four-wheel disc antilock brakes with Brake Assist
- Remote keyless entry
- Security alarm
- Supplemental front-seat-mounted side air bags³
- Supplemental side-curtain air bags³
- Tire pressure monitoring

Capability & Functionality

- Electric Power steering
- Normal-duty suspension

500L Sport - \$23,495 MSRP¹

Enhancements vs. Pop:

- 16-inch aluminum wheels
- 115-volt auxiliary power outlet
- Auto-dimming rearview mirror
- Automatic temperature control with dual-zone control
- Body-colour exterior mirrors
- Chrome and leather-wrapped shift knob
- Deep-tint sunscreen glass
- Fog lamps
- Front-seat centre console
- Leather-wrapped steering wheel
- Heated front seats
- Power 4-way driver's lumbar adjust
- Sport cloth seats
- SiriusXM satellite radio with one-year subscription²
- Sun visors with illuminated vanity mirrors
- Universal garage door opener⁷
- Vinyl-wrapped instrument panel

500L Trekking - \$24,995 MSRP¹

Enhancements vs. Sport:

- 17-inch aluminum wheels
- P225/45R17 BSW all-season tires
- Body-colour fascia with accents
- Body-colour instrument panel
- Chrome bodyside moulding
- Premium cloth seats
- Sill moulding
- Unique front and rear fascia
- Wheel arch mouldings

500L Trekking Urbana - \$26,395 MSRP¹

Enhancements vs. Trekking:

- 17-inch Matte Black aluminum wheels
- BeatsAudio™ Premium Sound System
- Black leather-wrapped steering wheel
- Black roof
- Gloss Black instrument panel bezels
- Matte Black bodyside mouldings
- Matte Black exterior mirrors
- Satin door handles
- Sport Cloth low-back bucket seats

500L Lounge - \$26,495 MSRP¹

Enhancements vs. Sport:

- Chrome bodyside moulding insert
- Chrome exterior mirrors
- Leather-faced seats
- Park-Sense® Rear Park Assist⁵
- ParkView® Rear Back-up Camera⁵
- Power driver and passenger 4-way lumbar adjust
- Premium vinyl-wrapped instrument panel
- Rear-seat armrest with cup holder

Optional Equipment	Pop	Sport	Trekking	Urbana	Lounge
6-speed AISIN® heavy-duty automatic		●	●	●	●
6-speed Euro Twin-Clutch automatic	●				
16-inch Aluminum Wheels		●			
17-inch Aluminum Wheels			●		●
17-inch Machined Aluminum Wheels with Black Pockets					●
17-inch Machined Aluminum Wheels with White Pockets					●
BeatsAudio™ Premium Sound System		●	●		●
Compact Spare Tire	●	●	●	●	●
GPS Navigation ⁸		●	●	●	●
Leather-faced Seats			●		
Rosso (Red) Roof				●	
Nero (Black) Roof		●	●		●
Blanco (White) Roof		●	●		●
Power Sunroof		●	●	●	●
Safety Group	●	●	●	●	
SiriusXM Satellite Radio ² with 1-year subscription	●				
Stone Instrument Panel			●		
Uconnect 6.5A AM/FM/Bluetooth		●	●	●	●

Fuel Economy Based on 2015 EnerGuide fuel consumption ratings. Government of Canada test methods used. Your actual fuel consumption will vary based on driving habits and other factors. Use for comparison purposes only. Ask your retailer for EnerGuide information.

	CITY L/100 km (mpg)	HWY L/100 km (mpg)
1.4L 16V MultiAir I-4 Turbo	6-Speed Manual	9.3 (30)
	6-speed Euro Twin Clutch Automatic	9.9 (29)
	6-Speed AISIN Automatic	10.6 (27)

1. Driving while distracted can result in loss of vehicle control. Only use mobile phones and other devices, even with voice commands, when it is safe to do so. Voice commands of phone require a Bluetooth Compatible Phone. 2. Requires SiriusXM radio subscriptions governed by SIRIUS terms and conditions available at siriusxm.ca. 3. The advanced front air bags in this vehicle are certified to the federal regulations for advanced air bags. Children 12 years old and younger should always ride buckled up in a rear seat. Infants in rear-facing child restraints should never ride in the front seat of a vehicle with a passenger front air bag. All occupants should always wear their lap and shoulder belts properly. 4. No system can repeal the laws of physics or overcome careless driving actions. Performance is limited by available traction, which snow, ice and other conditions can affect. When the warning lamp flashes, the driver needs to use less throttle and adapt speed and driving behaviour to prevailing road conditions. 5. This is a driver convenience system, not a substitute for active driver involvement. The driver must remain aware of their surroundings and be prepared to take corrective action to avoid collisions. 6. Always sit properly with the head restraint properly adjusted. Never place anything in front of the head restraint. 7. Not compatible with all garage door openers. 8. Never program while driving. GPS mapping and available 3D navigation may not be detailed or available in all areas or reflect current road regulations. †Prices as shown are MSRP. Excludes freight (\$1,745), air tax (\$100), insurance, registration, license, retailer administration fees, new tire. Duties in Quebec and dealer accessories are not included. Retailer may sell for less.